

ASABE AIM Technical Tours

Participation will be on a first to register basis. ASABE reserves the right to cancel tours for low attendance or unforeseen issues. Every attempt will be made to conduct these registered tours. Refunds will be made only if the tour is canceled.

Farm of the Future (N-Farms) & Nebraska Tractor Test Lab (NTTL) 103 Year Celebration

Date: Saturday July 8, 2023

Time: 12:00 PM departure from CHI Convention Center with return around 9:00 PM

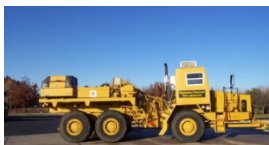
Includes Roundtrip Transportation between CHI and ENREEC N-Farm, and transportation to University of Nebraska Lincoln East Campus NTTL 103 year Celebration with dinner.

Nebraska Future Ag Research & Management Systems (NFarms)

The Nebraska Future Ag Research & Management Systems (N-Farms) program represents the University of Nebraska Lincoln's "Farm of the Future". The N-Farms program goal is to discover, deploy, & test advanced climate-smart practices and technologies (CSPTs) with a specific focus on nutrient management at demonstration sites for integrated cropping and beef production agroecosystems. Leveraging two existing sites at the University of Nebraska Eastern Nebraska Research, Extension & Education Center (ENREEC) – a row-crop production operation of nearly 3,000 acres consisting of both rain fed and irrigated fields and a 4,000-head capacity beef feedlot with 138 research and 32 commercial scale pens – NFARMS will advance producer-centric research into the CSPTs that can enable continuous improvement for crop and livestock farming operations and equip stakeholders over time to better evaluate and implement these CSPTs on various farm types, including croplands, rangelands, and feedlots. Join us for a tour of the facility and interact with faculty and staff working on projects at ENREEC.



Nebraska Tractor Test Lab (NTTL) 103 year Celebration



Participate in the NTTL's celebration of a century of testing tractors and see a representation of tested tractors with a wide range of technology, including the Larsen Tractor and Power Museum exhibits. Then, enjoy a special celebration program & dinner.

'The University of Nebraska Tractor Test Laboratory (NTTL) is the officially designated tractor testing station for the United States and tests tractors according to the Organization for Economic Co-operation and Development (OECD) codes OECD codes. Tractors are normally tested in the country of manufacture. Twenty-nine



Institute of Agriculture and Natural Resources

NEBRASKA TRACTOR TEST LABORATORY

countries adhere to the tractor test codes (including non-OECD members: China, India, & Serbia) with active tractor test stations in approximately 25 of those countries. Reciprocity agreements with the codes require that once an OECD test report is officially approved, it must be accepted by all participating countries.

NTTL employs 25-30 part-time student workers, most majoring in Agricultural Engineering or Agricultural Systems Technology through UNL's Biological Systems Engineering Department. Many of these students are also members of the Quarter Scale Tractor Team, which competes in an annual event sponsored by the American Society of Agricultural and Biological Engineers.

Tour Requirements: Participants must be 16 years or older, able to take the walking tour and manage stairs, wear closed toe shoes, and no shorts. No backpacks will be permitted at tour or at NTTL (you can leave bags on the bus). All tour attendees are responsible for their personal property.

Cost: \$70 – Includes Roundtrip Transportation between CHI and ENREEC, then to NTTL and entrance to the NTTL Celebration and dinner.